

Versos al organo con duo para chirimias

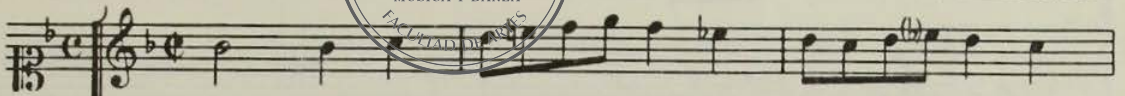
RBMSA, 7



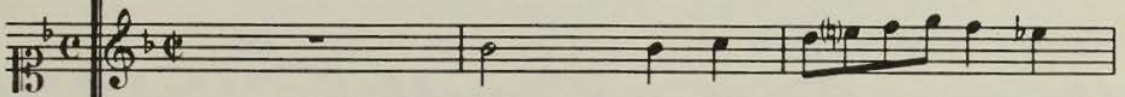
Versos al organo con duo para chirimias

Manuel Blasco, 1684

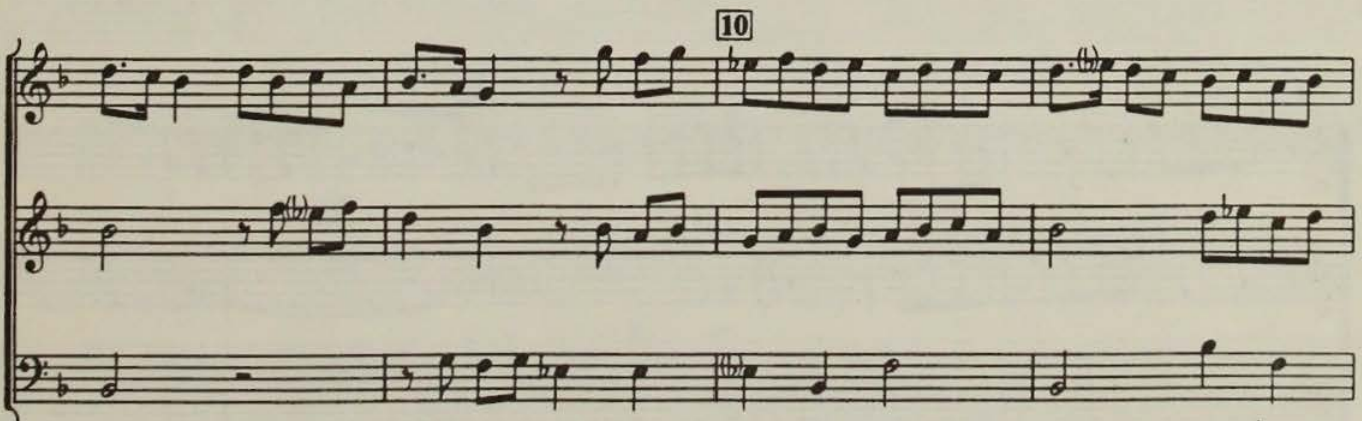
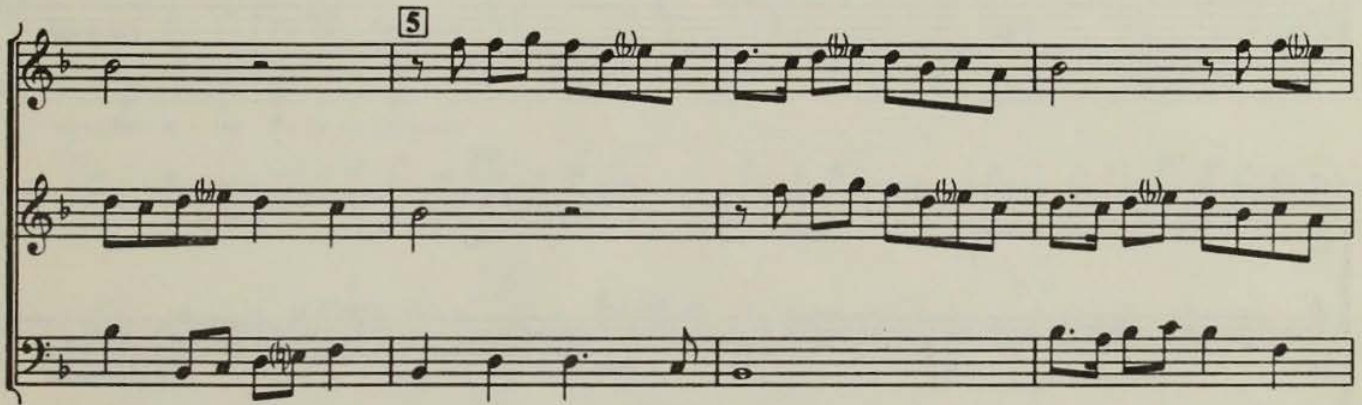
Tiple 1



Tiple 2



Guion a los versos
de las chirimias:
octavo accidental



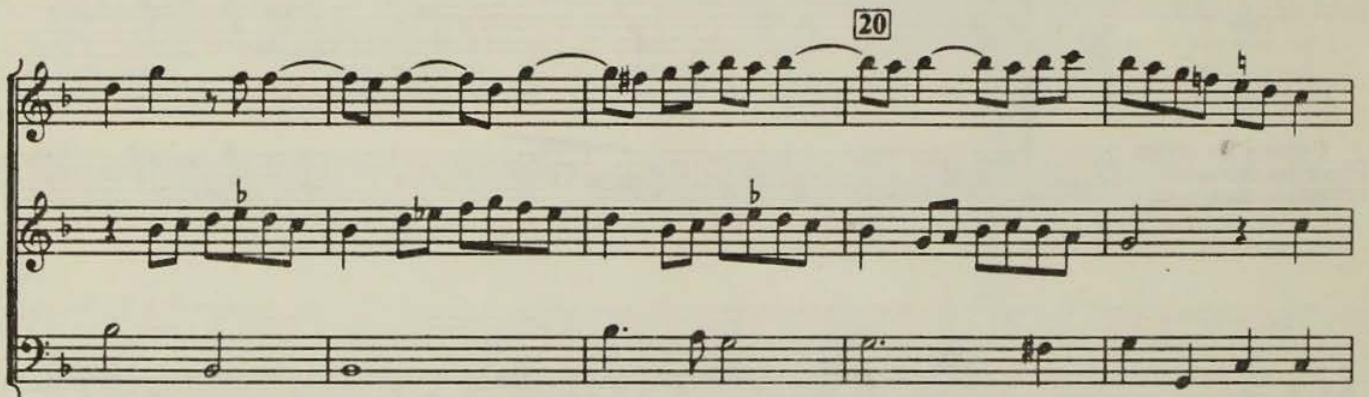
15



UNIVERSIDAD DE CHILE
BIBLIOTECA
MÚSICA Y DANZA
FACULTAD DE ARTES

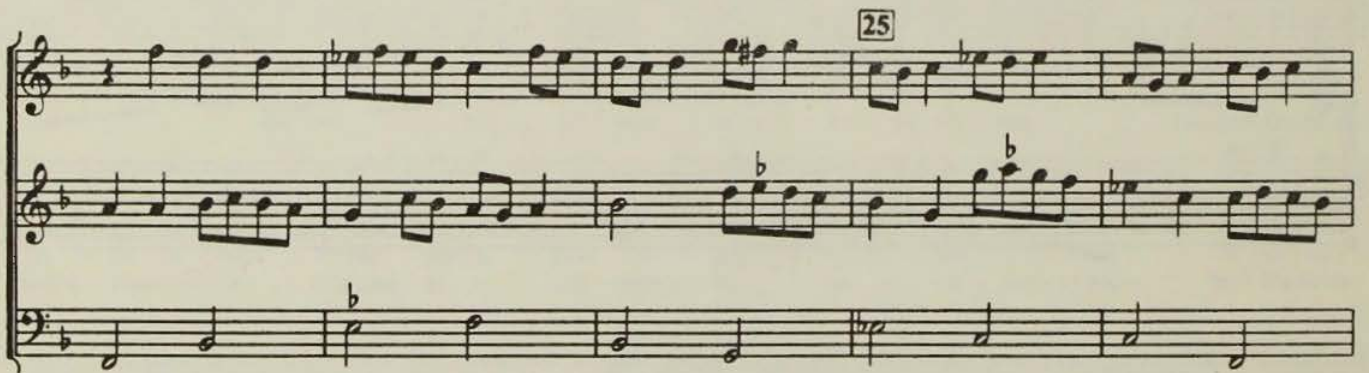
This system contains three staves of music. The top staff begins with a treble clef, a key signature of one flat (B-flat), and a common time signature. It features a melodic line with eighth and sixteenth notes, including a trill. The middle staff continues the melody with similar rhythmic patterns. The bottom staff provides a bass line with quarter and eighth notes. A circular library stamp is centered over the system.

20



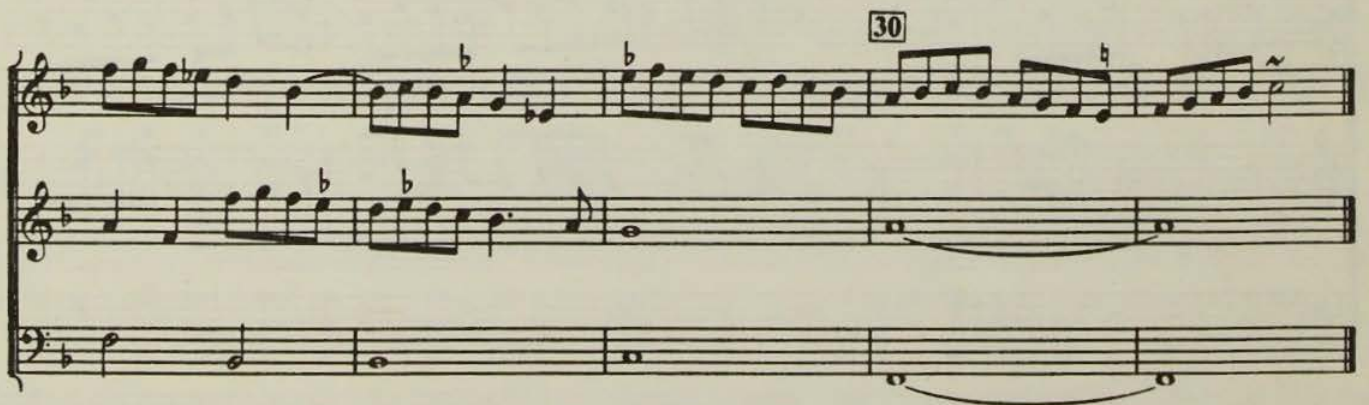
This system contains three staves of music. The top staff continues the melodic line with eighth notes and some slurs. The middle staff has a more active bass line with eighth notes and some accidentals. The bottom staff continues with a steady bass line.

25



This system contains three staves of music. The top staff shows a melodic line with eighth notes and some slurs. The middle staff has a bass line with eighth notes and some accidentals. The bottom staff continues with a steady bass line.

30



This system contains three staves of music. The top staff features a melodic line with eighth notes and some slurs. The middle staff has a bass line with eighth notes and some accidentals. The bottom staff continues with a steady bass line.